



MILITARY • LAW ENFORCEMENT • SECURITY

atstargets.com

651-429-8091

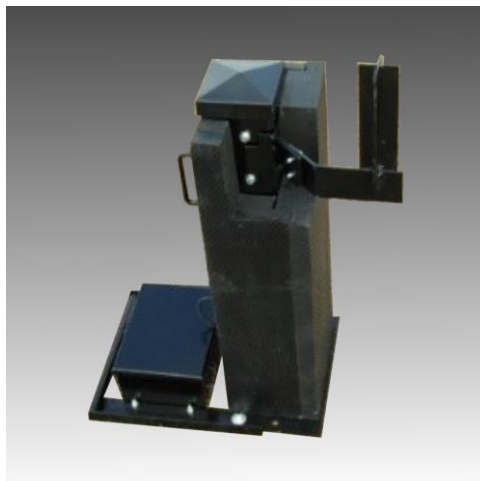
info@atstargets.com

79 E. 8th St.

Waconia, MN 55387

PT-51 Dummy Dumper Stationary Reactive Target with Stop-Drop

OPERATIONS AND MAINTENANCE GUIDE



Read and fully understand the contents of this manual before using the PT-51. The included Quick Start Guide is not a substitute for this manual.

WARNINGS

- **Failure to follow the instructions in this manual may result in bodily harm** to yourself or others.
- **Turn the power OFF when not in use.**
- **The PT-51 is not 100% waterproof or weatherproof.** Prolonged exposure to the elements may result in damage to the unit, and any needed repairs may not be covered under warranty.
- **Ensure all personnel and obstructions are clear of the target at all times** when in use.

Full bill of materials from template.

(we can print a completed template to PDF or something similar, then bring it in to the final product. This is as many pages as it needs to be, and may eliminate the need for an extra “spare parts list” at the end of the manual since this will be more comprehensive.)

Assembly and Installation

The PT-51 is shipped in one box, containing the following components:

- Battery compartment skid;
- Target holder bracket;
- Column assembly (protected by a rubber cover;)
- Length of PVC pipe;
- Hit sensor with cable.

TIP: Save all original packaging, in the event your unit needs to be shipped back to ATS for servicing or warranty repairs.

We recommend assembling **Manikin Mike™** before proceeding. Refer to the included Assembly Guide for further information.

Follow the pictures on the next pages as you proceed through assembly.

- 1. Unbox the mannequin tube bracket, battery box/frame, and column assembly.**
- 2. Remove the two nuts/washers from the studs on the battery box/frame.**
- 3. Lift and align the two rear holes on the column base plate with the studs on the battery box frame. Lower the column over the studs, and secure with washers/nuts.** Note that the battery box should be on the same side as the control panel on the column.
- 4. Connect the battery box plug with the mating plug cord from the control panel.**
- 5. Connect the battery.** Attach the connector ends inside the battery box onto their proper terminals. Black is negative, red is positive.

6. **Attach the mannequin tube bracket to the column.** Push the tube bracket into the latch on the column.
7. **Attach the hit sensor.** Stick the sensor to Manikin Mike's™ left hip and secure with duct tape. Connect the other end to the SENSOR port on the column.
8. **Turn the control switch to the TEST position.** After a few seconds, the tube bracket will release. Reattach it once it drops.

If the drop test is successful, the target is ready for use.

Operating the PT-51

Before proceeding to use the target, perform the following pre-checks.

- Ensure the target batteries are fully charged.
- Ensure that there are no visual signs of damage to the target.
- Ensure the two nuts holding the battery skid in place are as tight as possible. Due to harmonic vibration in the plate, they will loosen over time.

WARNING: Ensure all personnel and obstructions are clear of the target unit at all times!

Preparing the Target for Training

Attach Manikin Mike™ on the tube bracket. Wrap the cable tether around his left leg, then clip it back to itself. Connect the power cable to the control panel.

During Training

The hit sensor is disabled while the unit is powered on. To enable hit sensing, select a hit count from 1 to 6, then press the red RESET button.

When the desired hit count is reached, the target will immediately “drop” the mannequin by releasing the latch holding it in place. The hit sensor will be disabled until the mannequin is replaced and the RESET button is pressed.

Replacing the Mannequin After a Drop

Once the mannequin drops, the hit sensor will be disabled until the mannequin is replaced and the RESET button is pressed.

WARNING: Do not remove the tether connecting the bracket to the column, except to reset the target. Left untethered, the bracket can fall straight down and damage the column at its base.

To replace the bracket after it falls, lift the mannequin off the bracket. Guide the diagonal notch on the inside of the bracket into the slot on the column. You should feel the latch engage.

TIP: It may take more than one attempt for the latch to engage. If you do not feel the latch engage, withdraw the bracket and try again.

Mount the mannequin back onto the pole and press RESET to resume sensing hits.

After Training

Once your session is finished and fire has ceased, perform the following post-checks:

- Disconnect the POWER and/or SENSOR cables to save power.
- Ensure that there are no visual signs of damage to the target.
- Check the target battery level with a voltmeter. If the reading is below 11 V, recharge the battery.

Maintenance

Storing the Target After Use

Store the unit in a sheltered location if possible. It is not designed to be left out in the elements on a continuous basis, and any failure resulting from prolonged exposure to the elements is not covered under warranty.

If desired, you can store the unit with the bracket disconnected. With column power on, lift the mannequin off the pole, then turn the knob to TEST. After a few seconds, the bracket should release. You are then free to disconnect the battery and charge as usual.

Power Information

Most PT-51 installations run on a 12 VDC sealed lead-acid battery with ¼” terminals. This type is generally available from most battery suppliers; however, you can also order replacement batteries from ATS as a service part.

To maximize run time, charge the battery after each use of the target and store with a fully charged battery. Use a 12 VDC charger/maintainer with a current rating of 2A or less. Do not overcharge; this will shorten battery life. However, if you are using a maintainer, you can leave the target connected until ready to use.

The PT-51 can be hardwired for installation in a permanent shoothouse. Contact ATS for this option.

Periodic Maintenance

The PT-51 is designed to be a service-free device. There are no scheduled service items or serviceable points within the column. If desired, you can apply a small amount of lubricant or WD-40 to the latch mechanism. It is always good practice to wipe away any excess oil/grease to prevent dust and dirt buildup.