

# RANGE SYSTEMS™

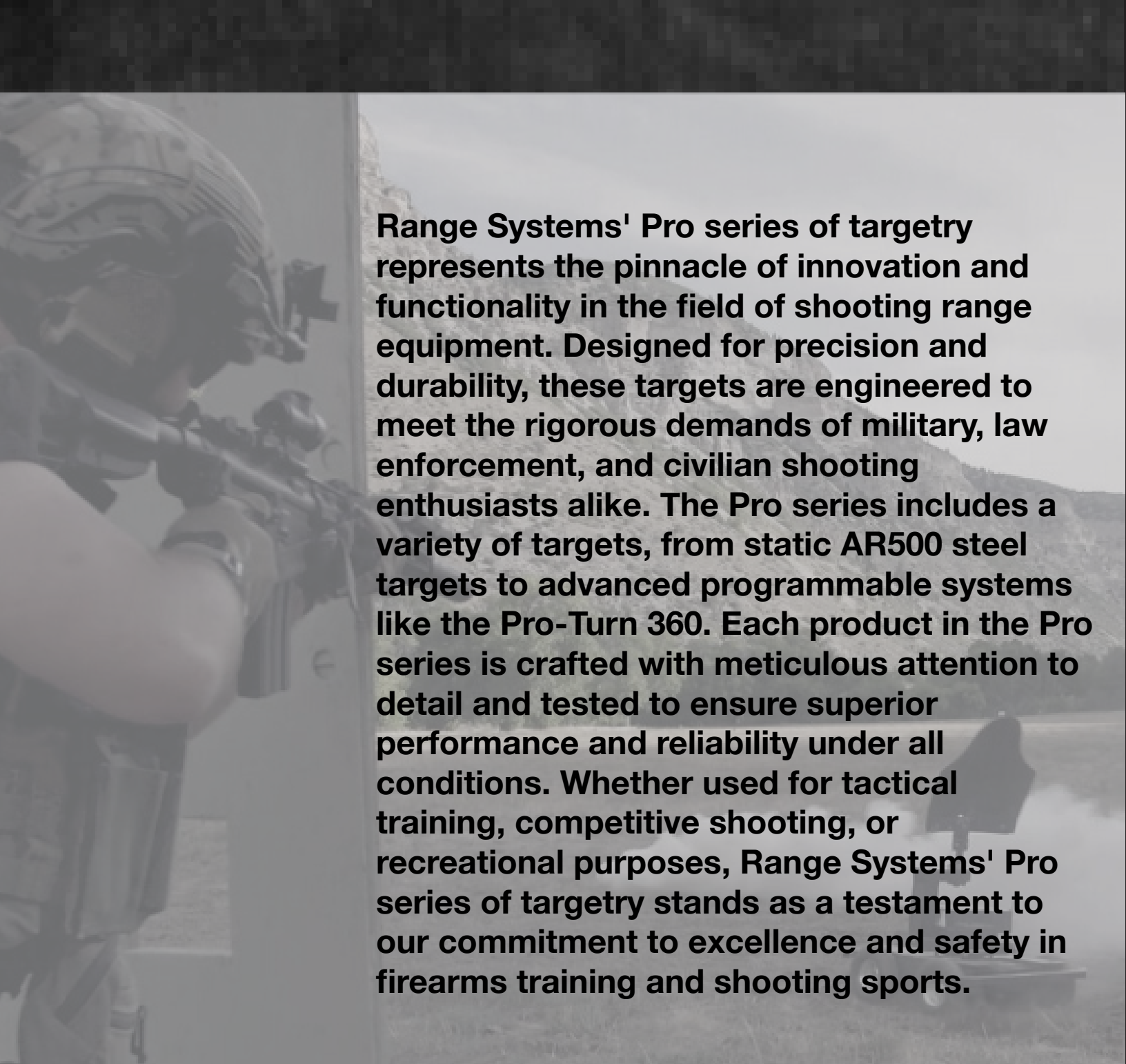
## TARGET SYSTEMS



made in U.S.A. since 1973

(888)-909-8172

[range-systems.com](http://range-systems.com)



**Range Systems' Pro series of targetry represents the pinnacle of innovation and functionality in the field of shooting range equipment. Designed for precision and durability, these targets are engineered to meet the rigorous demands of military, law enforcement, and civilian shooting enthusiasts alike. The Pro series includes a variety of targets, from static AR500 steel targets to advanced programmable systems like the Pro-Turn 360. Each product in the Pro series is crafted with meticulous attention to detail and tested to ensure superior performance and reliability under all conditions. Whether used for tactical training, competitive shooting, or recreational purposes, Range Systems' Pro series of targetry stands as a testament to our commitment to excellence and safety in firearms training and shooting sports.**

**RANGE** ™  
**SYSTEMS**

[range-systems.com](http://range-systems.com) | (888) 909-8172 | [sales@range-systems.com](mailto:sales@range-systems.com)





## Table Of Contents

Page	
4-6	Turning Target Systems
7	Advanced Reactive Steel Target System
8-12	Reactive Target Systems
13-16	Target Retrieval Systems
17-22	Moving Target Systems
23-25	Targets
26-27	Controls
28-29	Ballistic Range Equipment Protection
30	Press Release Acquisition of ATS Targets
31	About Us
32	Service

# Pro-Turn Series

## Pneumatic and Electro Mechanical Target Systems

Range Systems' Pro-Turn Series of Turning Targets stands as the epitome of comprehensive turning target solutions available today. Specifically designed for rigorous firearms training, the Pro-Turn series seamlessly integrates qualification exercises with tactical scenarios. Engineered for durability, these robust systems create dynamic and challenging shooting environments. With user-friendly programming via tablet interface, they effortlessly

simulate new and high-stress situations at the touch of a button. Range Systems offers a complete range of pneumatic turning targets, including cost-effective options with 90-degree or 180-degree turning capabilities. Leading the industry is the Pro-Turn 360, renowned for its reliable electro-mechanical design enabling full 360-degree turning, ideal for realistic friend/edge/foe training simulations.

	<b>PRO-QUAL 90</b>	<b>PRO-TURN 90</b>	<b>PRO-TURN 180</b>	<b>PRO-TURN HD</b>	<b>PRO-TURN 360</b>
power	air	air	air	air	Electro-Mech
rotation	90° shoot/edge	90° shoot/edge	180° shoot/edge/ don't shoot	90° shoot/edge	360° shoot/edge/ don't shoot
target capacity	foam, cardboard or plastic	foam, cardboard or plastic	foam, cardboard or plastic	2-in. by 2-in. wood stave pockets	foam, cardboard or plastic
programmable	limited	•	•	•	•
hit-sense option					•
individual target control	ganged (3-7 targets)	•	•	•	•
control type	PT Series or manual	PT Series or manual	PT Series or manual	PT Series or manual	PT Series or manual
wireless option	•	•	•	•	•



# Pro-Turn 360

## Electro-Mechanical Turning Target System

Built upon the reliable Pro-Turn foundation, the Pro-Turn 360 utilizes Range Systems' advanced electronics technology to create a fully programmable, hit-reactive turning target system with a complete 360-degree rotation. This system supports comprehensive threat/non-threat scenarios and incorporates hit scoring into a single platform.

The Pro-Turn 360 is constructed from all-weather, all-steel materials, ensuring durability and reliability. It operates as a fully electric turning target system, compatible with standard 120VAC power supply



and offering an optional integrated battery backup for continuous training sessions.

Range Systems has been a leader in threat/non-threat training target systems since introducing the Duel-A-Tron®, setting benchmarks for use-of-force decision-making scenarios.

This system seamlessly integrates with Range Systems' various controller options, ranging from simple handheld devices to Android™ or Windows™ tablets, and comprehensive range control computer systems. Each controller utilizes Range Systems' user-friendly UTC™ Software, ensuring intuitive operation across all platforms.

### PRO-TURN 360 FEATURES:

- Now available with optional overhead mount!
- Optional white or red/blue LED lighting
- Standard 600-meter, with optional 2,000-meter wireless range
- Friend/Edge/Foe – full radius turning capability
- Hit-reactive, counting/scoring
- Fully programmable

---

# Pro-Turn

## Pneumatic Turning Target Systems

### 4 OPTIONS AVAILABLE

#### PRO-QUAL 90

The Pro-Qual 90 is a cost-effective pneumatic live-fire turning target system, ideal for shooting ranges needing synchronized targets for practice, basic qualification, familiarization, or competition courses. It features a primary master pneumatic target actuator, which synchronizes the movement of secondary slave targets. These slave targets are connected to the primary actuator via drive rods, ensuring that all targets turn in unison

#### PRO-TURN 90

The Pro-Turn 90 pneumatic target system offers individual control for each target position, with each target equipped with its own independent pneumatic cylinder. This allows the Rangemaster to program each target to turn at varying face times and delay intervals, ensuring precise target control through independent manual switches, solid-state timing, or computer control. The user-friendly system enables targets to be sequenced individually, in series, or simultaneously with the touch of a single button.

#### PRO-TURN 180

The Pro-Turn 90 pneumatic target The Pro-Turn 180 is a fully programmable target system offering independent control for each unit. This advanced shoot/don't shoot system enhances training scenarios by dynamically presenting targets that can turn to

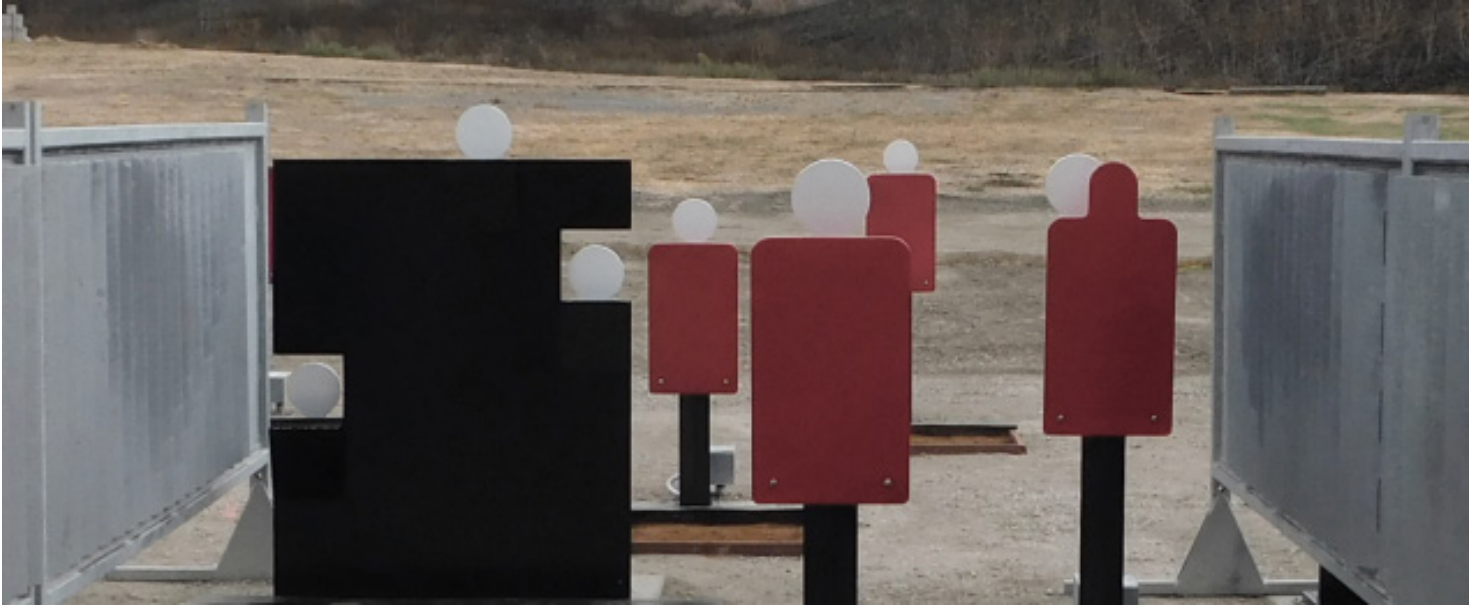
show their face, edge, or back. Ideal for creating realistic and stress-inducing environments, the Pro-Turn 180 provides the flexibility to design custom training programs that meet specific needs.

#### PRO-TURN HD

The Pro-Turn 90HD pneumatic target system is designed for combined qualification and tactical firearms training. Developed for the United States Marine Corps, this system can display either the face or edge of the target, creating dynamic and stressful training scenarios. While it can be used for basic qualification, it is also ideal for training in high-stress, real-life situations due to its ability to be programmed for new, dynamic, and challenging cycles.







# Pro-React Targets

## Advanced Reactive Steel Target System

Range Systems introduces the Pro-React Range pneumatic reactive steel live-fire target system for tactical firearms training. Developed for federal law enforcement and the United States military, this system can present targets in half-second increments, creating dynamic and stressful target practice that drives speed and accuracy.

The Pro-React pneumatic target system enables fully programmable individual control of each target position. The rangemaster can program each target to present and hide autonomously at different face times, as well as at different delay times individually or synchronized. The system can be controlled wirelessly using either an Android™ or Windows™ tablet, or a stationary computer in a range control booth or tower. Targets may be manually

sequenced individually, in a series, or simultaneously at the touch of a button.

As with all of Range Systems field proven systems, all controls are based on the easy-to-use, Range Systems developed, UTC™ Software.

### PRO-REACT TARGET FEATURES:

- Easily configured into a Rogers Range layout
- Pneumatic driven
- Standard 600-meter, wireless range
- 0.5s face time increments
- Hit-reactive, auto resetting ballistic steel targets
- Fully programmable

---

# Pro-SIT Series

The Go Anywhere, Train Anywhere, man portable (12VDC), Pro-React is a hit-reactive tactical target system. This is the target that pops-up, and swivels 360° (Pro-SIT 360) in a single target cycle. The Pro-SIT 360 is the flagship of the industry-leading Range Systems Pro-SIT Series of programmable, portable, pop-up, shoot/don't shoot and reactive steel sniper target systems.

Range Systems pioneered shoot/don't shoot training target systems with the development of the Duel-A-Tron and has continued to set the bar for use-of-lethal-force decision-making. Scenario training requires versatile targets like the latest Duel-A-Tron-inspired PT Series of pop-up shoot/don't shoot portable targets.

All of these target systems run off any of Range Systems Targets' controller options, which range from a simple handheld, to an Android™ or Windows™ tablet, to a range control computer system. Each of these systems are based on the easy-to-use, Range Systems developed, UTC Series of universal target control software.

## 2 OPTIONS AVAILABLE

1. The **Pro-SIT** is a radio-controlled, programmable, pop-up, hit-reactive target mechanism.
2. The **Pro-SIT 360** (shown) also incorporates 360° twist for shoot/edge/and don't shoot target positions, as well as down.







Pro-SIT with MILES Target System

## PRO-SIT FEATURES:

- Now with MILES capability!
- Standard 600-meter, with optional 2,000-meter wireless range
- Shoot/Edge/Don't Shoot – 360° turning capability (Pro-SIT 360 only)
- Hit-reactive, counting/scoring
- SITS, PITS, MITS, PITA, and JCTT options
- Fully programmable
- Reacts to all simulated munitions and airsoft
- Lightweight, can be used as portable or stationary





---

# Pro-Sniper Series

## Reactive Sniper Target

The Pro-Sniper Series, Portable (12VDC) reactive steel target system that reacts when hit and is able to automatically reset. Unlike the competition, the Pro Sniper Series is able to be targeted while resetting. It is Ideal for honing sniper and shooting skills under pressure. Elevate your performance with precise, responsive target engagement like never before.





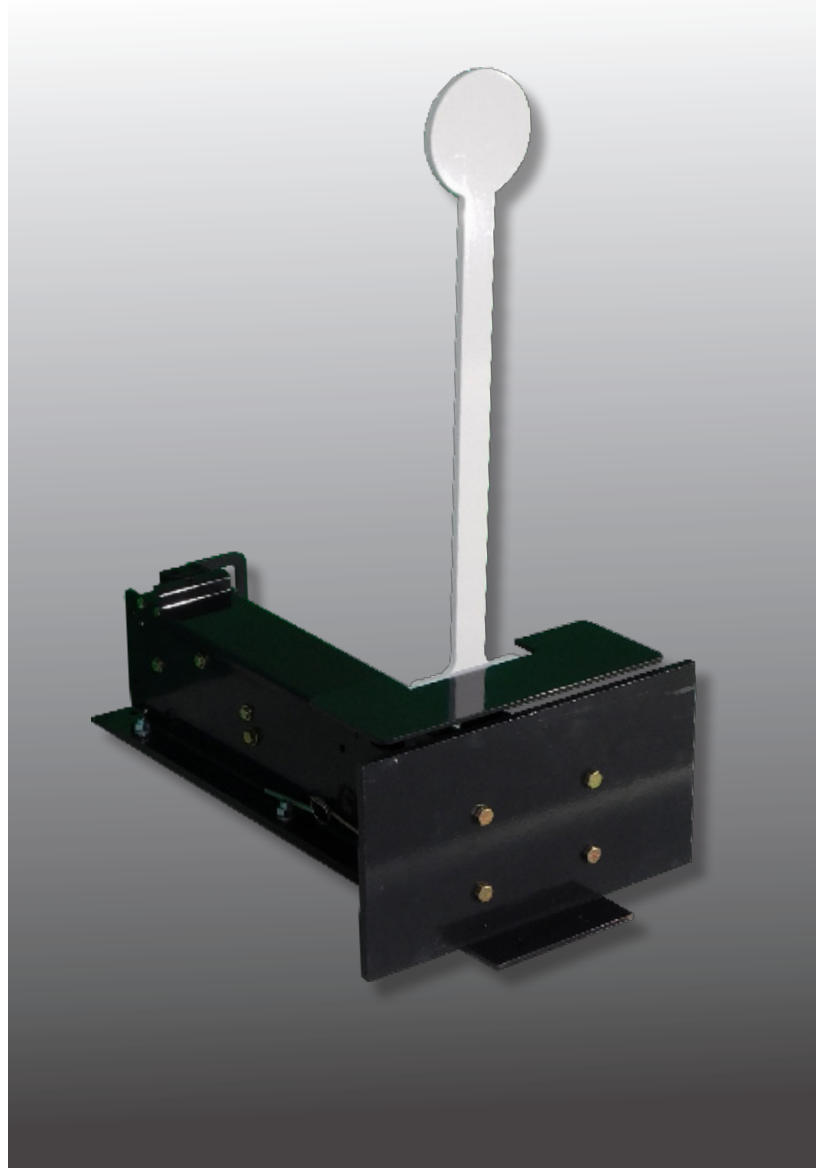
---

# Pro-Sniper Lite

## Auto Resetting Sniper Target

A portable, reactive steel sniper target system, the Pro-Sniper offers:

- Can be shot while resetting unlike the competition
- Low-cost, any-distance target
- Portability; can be carried by a single person
- Light weight(40 lbs.); small “footprint” (6-in. H by 6-in. W by 26-in. L)
- 3/8-in. AR500 ballistic steel silhouette target (12-in. W by 18-in. H by 3/8-in.)
- Now with 3/8-in. steel barrier to protect the lifter (14-in. W by 7 1/2-in. H by 3/8-in.)
- Auto reset feature standard; target resets itself automatically 5 seconds after each hit
- Built-in power supply; no external wires
- Simple operation; after battery connection, unit instantly becomes operational
- Available with silhouette or lollipop-style targets; other shapes available upon request
- 12VDC

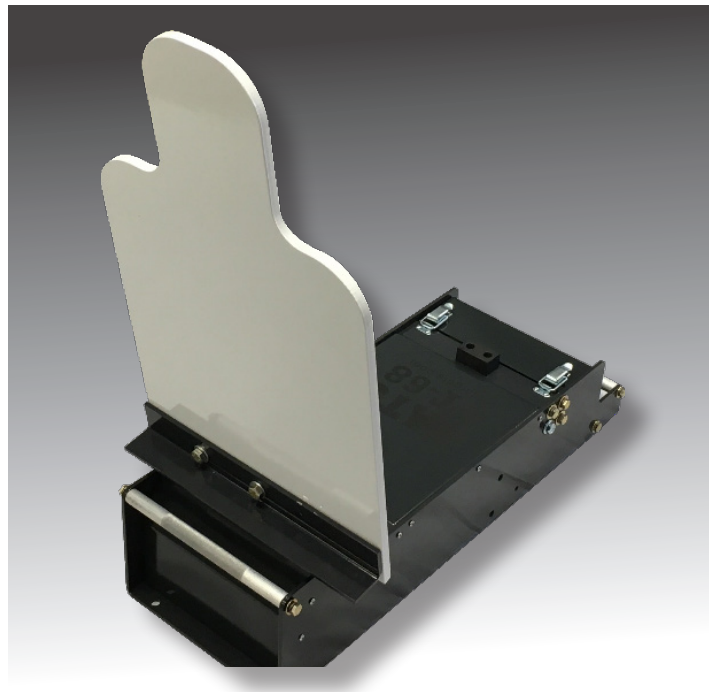


---

# Pro-Sniper

# Pro-Sniper HD

Long-Range Reactive Steel Sniper Target System



The Pro-Sniper is a portable (12VDC), programmable target lifter designed to handle AR500 plates or mannequins. It lifts targets with auto-reset functionality and allows shooters to program specific exposure times before resetting. Tailored for long-range shooting up to 600m, it offers versatile and reliable target management capabilities.

### PRO-SNIPER FEATURES:

- Can be shot while resetting unlike the competition
- Man portable; compact, weighs 32 lbs. (lifter)
- Pro-Sniper model lifts up to 50 lbs. Pro-Sniper HD lifts up to 70 lbs
- Lifts rifle-grade steel silhouettes, bullseye plates, and Manikin Mike™ 3DHTs within 8-10 seconds
- Standard auto reset feature

---

# Target Retrieval Systems

Overhead Target Retrieval System is a sophisticated and integral part of modern shooting range, providing significant advantages in safety, efficiency, and training effectiveness. Range Systems offers three options ensuring that you have the right tools to meet your specific training goals and budgetary considerations.

## **3 OPTIONS AVAILABLE**

- **RS1000**
- **CR-2**
- **CR-2TL**





---

# RS1000

## Target Retrieval System

The RS1000 Target Retrieval System is ideal for shooters of all levels of experience. Anyone can operate it without the need for extensive training since moving the target is as easy as operating a toggle switch. Target movement and position is controlled by a manually operated bi-directional toggle switch. The user simply engages the switch to move the target carrier to the desired position. Releasing the switch decelerates the target carrier to a stop. As with anything that is located downrange, the target system is subject to being damaged from repeated hits or high caliber rounds. The modular design of the RS1000 Target System allows for quick and easy repairs in the event of damage, keeping downtime to a minimum so you can get your lane back up and running.



### RS-1000 FEATURES:

- Provides reliable product performance while maintaining easy operation at an attractive price point
- Economical to operate and maintain, which maximizes efficiency
- Easy to operate toggle control which eliminates user training and reduces manpower time and cost
- Commercial off the shelf replacement parts for minimized down time. Most repairs can be done by the operator
- Optimal transport speed of 6 fps for the right balance of durability and usability
- The carrier and clamp are protected with a 3/8" AR500 steel plate

---

# CR2

## Target Retrieval System

Range Systems CR-2 is a cable-driven target retrieval system with 7" touch screen lane control. This premium retrieval system has pre-programmed settings and also allows the user to manually set desired target stops. The system is built with high-strength aircraft cable and electrical components to assure a long service life with minimum maintenance. The Local Control modules use touch screen technology to provide instant intuitive control of the system.



### CR-2 FEATURES:

- Sensors prevent the carrier from slamming into the home and end positions, reducing accidents from startling the shooter
- Cable driven for reliability versus wireless systems that require calibrating, have connection issues, require expensive batteries to maintain and lack reliability in exact target positioning
- Cable positioning is concealed from the trajectory lines for reduced risk of cable breakage
- The front of the carrier is protected by a 3/8" AR steel angled plate that deflects errant rounds safely while also protecting internal components
- Target carrier has integrated LED lights mounted behind the front shield that include multiple patterns and colors for various training scenarios
- 5 year manufacturer warranty provides proven performance and long term durability Provides reliable product performance while maintaining easy operation at an attractive price point



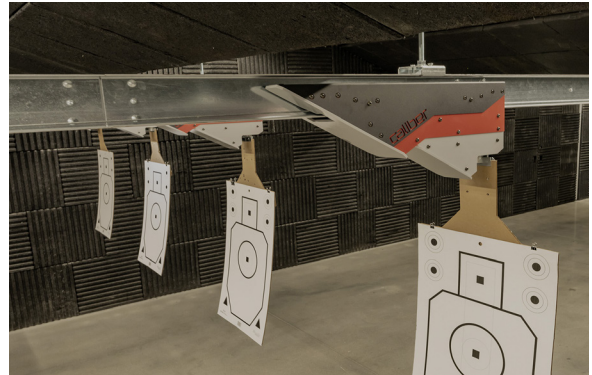
# CR-2TL

## Target Retrieval System

Range Systems CR-2TL is a dynamic turning target system designed to improve live fire training through unpredictable, fast-action target presentations. It can be programmed to randomly edge the target to the left or right and turn in increments up to 360 degrees to present a complete, unexpected turn at the direction of programmable software. This is a significant change from the standard target retrieval systems with which users can anticipate target movement.

### CR-2TL FEATURES:

- Programmable industrial LCD user interface for creating training scenarios, which include turning and edging movements
- Sensors prevent the carrier from slamming into the home and end positions, reducing accidents from startling the shooter
- Cable driven for reliability versus wireless systems that require calibrating, have connection issues, require expensive batteries to maintain and lack reliability in exact target positioning
- The front of the carrier is protected by a 3/8" AR steel angled plate that deflects errant rounds safely while also protecting internal components
- An innovative recessed target holder reduces parts exposures to errant rounds and ricochets
- Target carrier has integrated LED lights mounted behind the front shield that include multiple patterns and colors for various training scenarios
- 5 year manufacturer warranty provides proven performance and long term durability









# Pro-Bot Series

An all-terrain mover operated remotely, designed to excel across a range of training environments such as Hogan's Alleys, UACs, MOUTs, combat villages, sniper training areas, and even unimproved pathways, roadways, and slightly uneven terrain.

## Robot Guide

	RENEGADE	ROVER	RANGER	ROGUE
class	improved surface only	improved surface only	rough terrain	extreme terrain
ground clearance	3.3-in. 	4-in. 	4-in. 	5.5-in. 
power	4WD	2WD	4WD	4WD
batteries (SLA)	two 9Ah	six 9Ah	six 9Ah	six 9Ah
lithium (LiFePO <sub>4</sub> ) optional	•	•	•	•
tires	10-in.	10-in.	10-in.	13-in.
airless	•			
base material	aluminum	steel	steel	steel
armor (optional)		•	•	•
Stop/Stop-Drop (optional)	•	•	•	•
GPS (optional)			•	•
track (optional)		•		

---

# Renegade

## Pro-Bot Moving Target Systems



The Renegade offers an affordable 4WD solution, operated via wireless remote control with a range extending up to 1,000 meters. It features an optional programmable Stop-Drop™ hit sensing technology, enhancing its functionality. Designed as a portable unit that conveniently fits into a car trunk, the Renegade serves as a versatile moving platform capable of replicating various human running patterns. It can operate at speeds ranging from a slow

“creep” speed of 1 ft. per second up to a maximum of 10 ft. per second. The package includes the Manikin Mike™ 3D human target, providing a comprehensive solution for dynamic training scenarios.

### RENEGADE FEATURES:

- Ideal for flat or improved surfaces
- Turns 360° on its own radius for lifelike maneuverability
- Wireless variable speed control
- Standard effective range: up to 1000 meters line of sight
- Full Running Man speeds
- Multi-mission off-road/rugged terrain operation
- Lightweight all aluminum construction
- Airless tires

---

# Ranger

## Pro-Bot Moving Target Systems

The Ranger is an All-Wheel Drive Moving Target System: Your versatile solution for dynamic live-fire training in any terrain. Engineered to excel on rough terrain ranges, the Ranger empowers users with exceptional performance. Featuring speeds up to 15 feet per second, a wide 1000-meter operating range, and a robust 150-pound payload capacity, the Ranger ensures flexibility in creating highly effective training scenarios. With a battery life extending up to 4 hours (extendable with LI option), this system guarantees prolonged operational readiness for intensive training sessions.

### RANGER FEATURES:

- Turns 360° on its own radius for lifelike maneuverability
- Wireless variable speed control
- Standard effective range: up to 1000 meters line of sight
- Full Running Man speeds
- Multi-mission off-road/rugged terrain operation
- High ground clearance
- Quick change battery pack
- Optional foam filled tires “run flat”





---

# Rogue

## Next Gen Pro-Bot

Range Systems introduces the Rogue Pro-Bot, the latest in its line of robotic targetry products. Designed for federal law enforcement and the US military, it stands as the ultimate moving live-fire target system for tactical firearms training.

This next-generation robot features larger tires for improved ground clearance on rough terrain, optional ballistic protection up to 7.62 caliber, GPS control, and multiple range and frequency options for operational versatility in diverse environments worldwide.

### ROGUE FEATURES:

- Now with Stop/Tilt Manikin Mike™!
- Turns 360° on its own radius
- Running man speeds to 8 mph
- Quick-change batteries with optional lithium ion for extended run time
- 1000-meter line of site (LoS)
- Optional hit-reactive, Stop/Drop Manikin Mike™
- Optional GPS
- Optional foam filled tires “run flat”





---

# Pro-Runner

## Running-Man Moving Target System

The Pro-Runner track-mounted moving target system is ideal for permanent or semi-permanent installation on a concrete pad. It is well-suited for scenarios involving a mix of moving and static targets, such as in training environments between building facades or in simulated urban settings (e.g., Hogan's Alley).

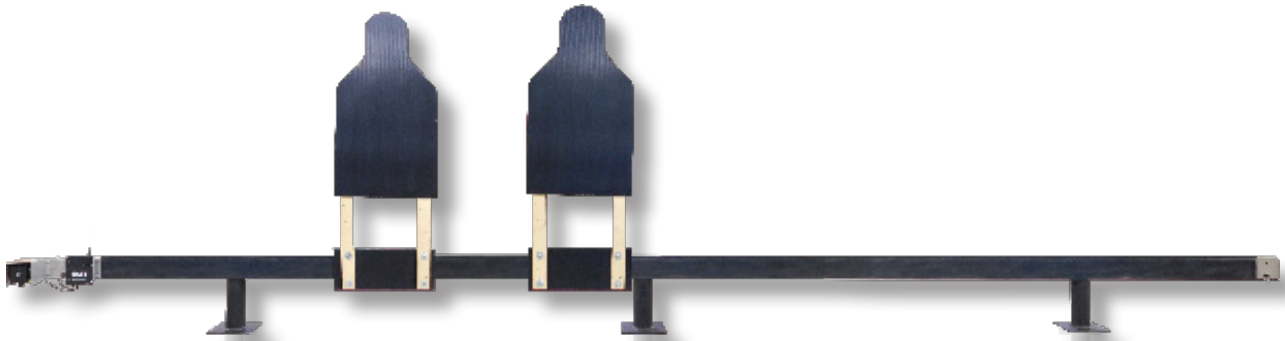
Operating on an I-beam track, the Pro-Runner can independently control one or two moving targets, each capable of moving in different

directions and speeds simultaneously. Additionally, targets can be paired together for synchronized training exercises.

As proficiency in engaging moving targets becomes increasingly crucial for many agencies, states, cities, and counties, the Pro-Runner has set a benchmark for quality and reliability. The latest generation introduced in 2019 incorporates new features that further enhance its effectiveness as a training tool.

**Maximize your team's proficiency**





## PRO-RUNNER FEATURES:

- Targets operate independently – forward or reverse at variable speeds or attack-retreat modes via remote control
- Operates on either 12 VDC automotive-style batteries for use in remote locations or hardwired for a permanent installation
- Can be set-up as dual with independent targets on each side of the rail (front and back)

## ADDITIONAL OPTIONS FOR PRO-RUNNER SYSTEM:

- Wireless radio system with a range up to 600 meters
- Cable run from walls, posts or trees instead of ground-mounted rail
- Ganged target pair
- Each target rail side can have either one or two ganged targets
- All stainless-steel construction for the harshest environments

# Pro-Runner Controllers

## 2 OPTIONS AVAILABLE



---

# Targets

Range Systems takes pride in being the foremost manufacturer of Army-E type and IVAN Silhouette targets. Our commitment extends beyond targets; we also offer a comprehensive range of accessories to complement your target systems. With our dedication to quality and innovation, we provide everything you need to enhance your training experience and optimize your shooting proficiency.



---

## IVAN Targets

### Plastic Silhouette

IVAN plastic partial 3D target silhouette. Features a common target mounting hole pattern for most Stationary Infantry Target (SIT) holders. Semi-self healing plastic prolongs life span for thousands of rounds.

Our IVAN target is available in five color variations: OD Green, Orange, Yellow, Red and Blue. Made in the U.S.A. and TAA compliant.



---

# Army-E Targets

## E-Type Military Plastic Ribbed Silhouette

Range Systems is excited to introduce our E-Type Military Plastic Ribbed Silhouette, a perfect fit for your training needs. Known as the 'ARMY-E', this target backer is designed to endure thousands of rounds, thanks to its semi-self healing plastic. Plus, its thicker construction prevents warping in high temperature environments.

Our Army-E target is available in five color variations: OD Green, Orange, Yellow, Red and Blue. Made in the U.S.A. and TAA compliant.

Range Systems takes pride in being the foremost manufacturer of Army-E type targets. Our commitment extends beyond targets; we also offer a comprehensive range of accessories to complement your target systems. With our dedication to quality and innovation, we provide everything you need to enhance your training experience and optimize your shooting proficiency.





---

# Manikin

## Mike™

### 3D Target System

Developed for use in shoot houses and Urban Operations (UO) training facilities, Manikin Mike™ is a 3D human figure target designed to enhance realism in street combat training scenarios. Featuring articulated joints, a 360° swivel head, and adjustable arms and legs, Manikin Mike™ offers a heightened level of training realism. Its hands are capable of holding objects, further enhancing its practicality.

Constructed from high-density, semi self-healing plastic, Manikin Mike™ can withstand thousands of high-velocity rounds. It is resistant to temperature variations, water, and UV rays, making it suitable for various environmental conditions. Additionally, it is environmentally friendly and recyclable.

#### KEY FEATURES:

- Capable of being used with Range Systems hit-sensing system to make it reactive
- Options available to mount stationary, hanging (Pro Drop OH), stationary with hit-sensing drop post (Pro Drop P), or moving with stop/stop-drop (Ranger)
- 5-minute installation

# Pro-Range Radio

## Pro-Turn Series Wireless Controller



The target controller for Range Systems' Pro-Turn Series (Pro-Sniper, Pro-Sniper HD, Pro-SIT) of programmable, portable, pop-up, shoot/don't shoot, and reactive steel sniper target systems now features USB connectivity, back-lighting, and a range of up to 600 meters.

### KEY FEATURES:

- USB connectivity to the ATS Targets' new UTC 3.0 range control software
- Windows™ and Android™ compatible
- Backlight with dedicated battery for low light and night training
- 600-meter target control range; 2,000-meter optional
- Fully programmable
- Controls up to 200 individual target systems



## UTC 3.0 software



---

# Pro-Range Control

## Pro-Turn Series Wireless Controller

The Pro-Range Control is the latest target controller for Range Systems' renowned PT Series (Pro-Sniper, Pro-Sniper HD, Pro-SIT) of programmable, portable, pop-up, shoot/don't shoot, and reactive steel sniper target systems. It now includes USB connectivity, backlighting, and covers a range of up to 600 meters.

### KEY FEATURES:

- Easy-to-use design
- Connects to any Android™ tablet
- Connects to any Microsoft Windows™ tablet with Range Systems UTC 3.0 software
- Connects to PC via Bluetooth™ (Samsung Galaxy™ Tab A included)
- 600-meter target control range  
2,000-meter optional
- Controls up to 200 individual target systems
- 2-day battery life, rechargeable via USB port
- Operates any Range Systems Pro-Turn target system,
- Small and lightweight radio
- Fits into standard mag pouch



---

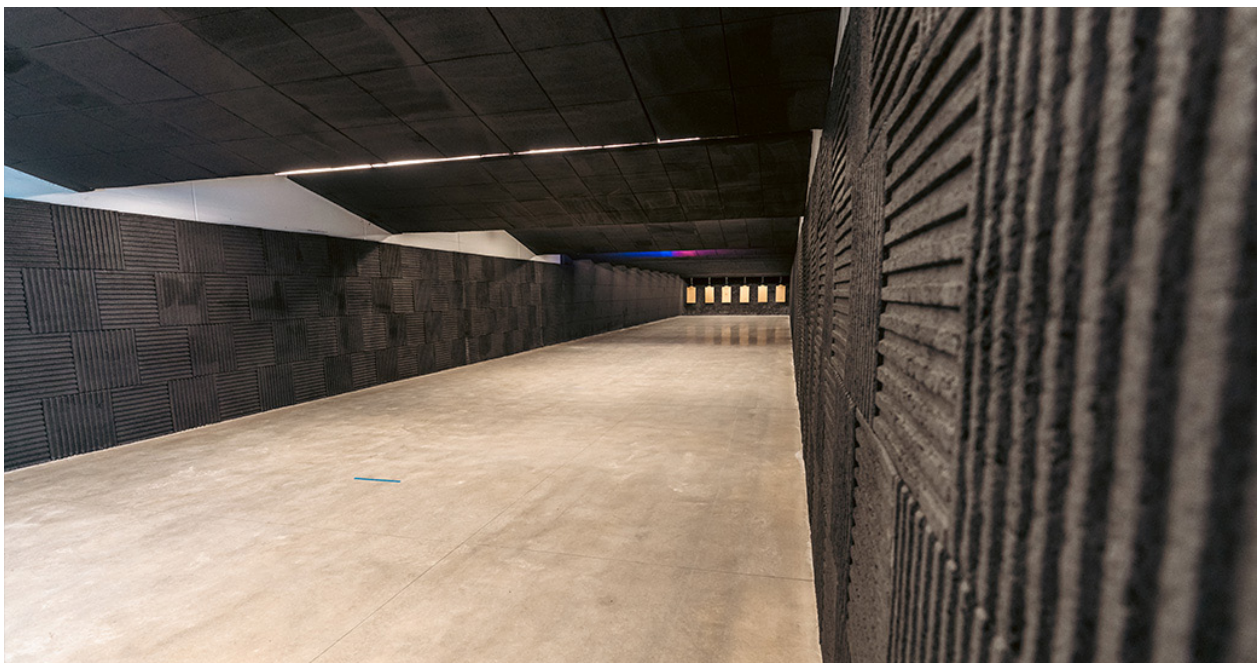
# Ballistic Rubber

## Range Safety Essentials

Range Systems Dura-Panel™ rubber composite product minimizes the hazards of ricochet and splatter, reduces airborne lead contaminants, and offers ballistic capabilities no other material can match. This product is the cornerstone of Range Systems Encapsulator™ bullet containment systems, shoot houses, baffle systems, and tactical ranges. It is also the only rubber product that has been independently tested for its ballistic performance. Don't jeopardize range safety – Be sure you are getting Dura-Panel™, the ballistic rubber preferred by the US military.

## Ballistic Rubber Protection and Acoustic Systems

Range Systems Pro-Tact™ ballistic equipment packages provide the safest, cleanest, and quietest range environment in the industry. Our proprietary Dura-Panel facing adhered to AR500 steel captures and contains rounds on contact reducing ricochets and reducing noise by up to 65%.





Here are some of the ballistic protection products where we use our ProTact systems:

- Baffles
- Safety Ceiling
- Ballistic Sidewall Protection
- Shooting Lane Dividers
- Free-Standing Ballistic Shields
- Sound Abatement

## **OUR BALLISTIC RUBBER**

### **Dura-Panel™**

Dura-Panel™ ballistic rubber is the cornerstone of our Pro-Tact containment systems. It's the only rubber product in the industry that has been independently tested and certified for use by the US Special Forces.

### **Acoustic Dura-Panel™**

Acoustic Dura-Panel™ has all the same great bullet encapsulation properties as our standard Dura-Panel with an increased noise reduction coefficient due to the groves molded into the face.

### **Dura-Bloc™**

Range Systems patented rubber composite block is designed to encapsulate ammunition up to 7.62 caliber. Its self-healing properties close the bullet's path after the round has penetrated the surface so each bullet is encapsulated inside the ballistic rubber block.

### **VULCAN™ VULCANIZED RUBBER**

VULCAN™ Bullet Encapsulation Blocks, Ricochet Panels, Flooring, and Curtains are manufactured from high density vulcanized rubber material.

---

# Knee Walls

## Ballistic Range Equipment Projection

### ProTacts™ Knee wall system:

The Range Systems ProTacts™ knee wall system offers protection for electronics, such as pop-up targets and running man systems, as well as other downrange equipment vulnerable to bullet strikes.

Constructed from 3/8" AR500 steel plate covered with 2-inch thick Dura-Panel™ ballistic rubber directly adhered to the steel, the ProTacts™ knee wall system provides robust protection. Steel sheets faced with Dura-Panel™ are supported by columns with base plates anchored securely to the floor. Designed to be freestanding, this system can withstand all pistol and rifle rounds up to 7.62 caliber.

### Benefits:

- ProTacts™ Knee wall system is ideal for ranges that have down range ground mounted equipment that needs protection.

- ProTacts™ safely defeats rounds and minimizes the hazards of ricochets and back splatter from bullets impacting this area of the range with the safe round encapsulation of Dura-Panel™.

### VULCAN™ KNEE WALL

Range Systems' VULCAN™ ballistic rubber panels, backed by AR500 steel plate, ensure personnel and equipment safety.

Vulcanized for increased durometer akin to automotive tires, this fully molded material retains its shape indefinitely, eliminates backside "pop-outs," withstands direct sun exposure without deterioration, and remains unaffected by freeze/thaw cycles. Ideal for outdoor applications.







---

# S.M.A.S.H. LIVE-FIRE SHOOT HOUSE

No other company in the world has the experience of Range Systems with over 60 live fire shoot houses in service

Range Systems designs and constructs advanced live fire shoot houses for global military and law enforcement. With expertise in setting US Military Special Forces training standards and collaborating closely with US Army Special Operations Command (USASOC), our modular designs are renowned for exceptional ballistic capabilities, durability, and ease of maintenance.

Our patented ballistic rubber encapsulating wall system minimizes ricochets, bullet splatter, and airborne lead particles, ensuring reliable performance in challenging environments and under intense live fire conditions.

Range Systems' SMASH™ offers realistic urban operations training with support for tactical movement, target

engagement, breaching exercises, and target discrimination in authentic settings. Our flexible configurations include sliding walls, ballistic doors, and window coverings to adapt layouts swiftly for diverse operational scenarios.

Our facilities offer customizable features such as standard and breach doors for different types of breaches (mechanical, explosive, shotgun). Floor plans include single-level to multi-level layouts with specialized elements like corner-fed rooms, hallways, and ballistic stairwells. External protections, like sliding ballistic covers securing all exterior openings, ensure comprehensive training capabilities in a safe environment.



## Range Systems Announces Acquisition of ATS Targets

New Hope, MN - Range Systems proudly announces the recent acquisition of ATS Targets (Advanced Training Systems). With the integration of ATS Targets as a new division within Range Systems, we've enhanced our position as a leader in providing the safest and most advanced ranges in the industry. This acquisition brings together Range Systems' longstanding commitment to ballistic performance with ATS Targets' innovative target system offerings. This creates expanded offerings and capabilities that will benefit our customers across all markets worldwide.

"This acquisition represents a pivotal moment for Range Systems as we continue to innovate and expand our offerings," said Charlie Baker, CEO of Range Systems. "Integrating ATS Targets with Range Systems reaffirms our commitment to our customers as a complete solution provider. With this synergy, we can meet all our customers' live fire training needs."

### **Key benefits of the acquisition include:**

**Enhanced Capabilities and Expertise:** ATS Targets brings with it over five decades of experience, innovation, and a strong reputation for quality in the industry. Retaining ATS Targets' personnel adds a division of new product development, creating a bright future of innovation in technology.

**Expanded Product Portfolio:** "We are excited about the opportunities this acquisition brings as it will greatly expand the portfolio of products and services that we can jointly offer to meet our customers' needs and will grow the volumes of both companies' products and services," remarked Mike Barto, Vice President, Product Development.

**Shared Vision:** Range Systems and ATS Targets share a steadfast commitment to our core values and look forward to the future with optimism. Together, we are poised to establish new industry benchmarks and lead in innovation and excellence.

Range Systems has been dedicated to offering high-quality solutions for live fire facilities since 1994. With our extensive experience in delivering facilities featuring proven designs, exceptional fabrication, and skilled installation teams, we have established ourselves as a reputable leader in the industry.

# About Us



Range Systems has been a leader in providing advanced live fire facilities. Our team has a strong history of delivering successful projects globally, known for quality design, fabrication, and installation. We set industry standards in range safety, ballistic performance, and unique capabilities.

Every project is unique, and at Range Systems, we tailor our solutions with careful consideration and extensive experience. We collaborate closely with our customers, leveraging our resources and industry partnerships to overcome challenges and ensure project success.

Working with Range Systems means integrating us into your team. We value customer relationships and strive for collaborative success. Our flexible approach ensures you receive customized solutions that meet your specific needs. Throughout the process, we prioritize communication and guidance to ensure a partnership that delivers results.

Beyond construction, Range Systems offers a comprehensive range of supplies and accessories to support the ongoing productivity, cleanliness, and safety of your facility.

Our work is guided by core values—Passion, Integrity, Intellectual Curiosity, Productivity, Conviction, and Respect—which define our company culture and interactions with colleagues, customers, and partners.

With our experienced team of range specialists, Range Systems has designed innovative firearm training environments for diverse clients. Trust our expertise to provide tailored solutions that meet your range needs effectively.



# RANGE SYSTEMS



## Industry Leading Service & Support

Whether you need range upgrades, installation assistance, or service, Range Systems can help. Call us today at (888) 909-8172 to schedule a field maintenance visit.

