



atstargets.com | 651-429-8091

[info@atstargets.com](mailto:info@atstargets.com) | 304 Main St. E. | NYA, MN 55397

# UNIVERSAL TARGET CONTROLLER

## UTC Version 3 SOFTWARE

### OPERATIONS GUIDE



**Read and fully understand this manual before using the software.**

## WARNINGS

- **Failure to follow the instructions in this manual may result in damage to controlled targets and/or bodily harm.**

## INSTALLATION

Download the software from atstargets.com or install from the included CD-ROM or USB flash drive. The installation package includes the following items:

- UTC software installer
- COM Port driver for connection to PTX-XXX Handheld Transmitter

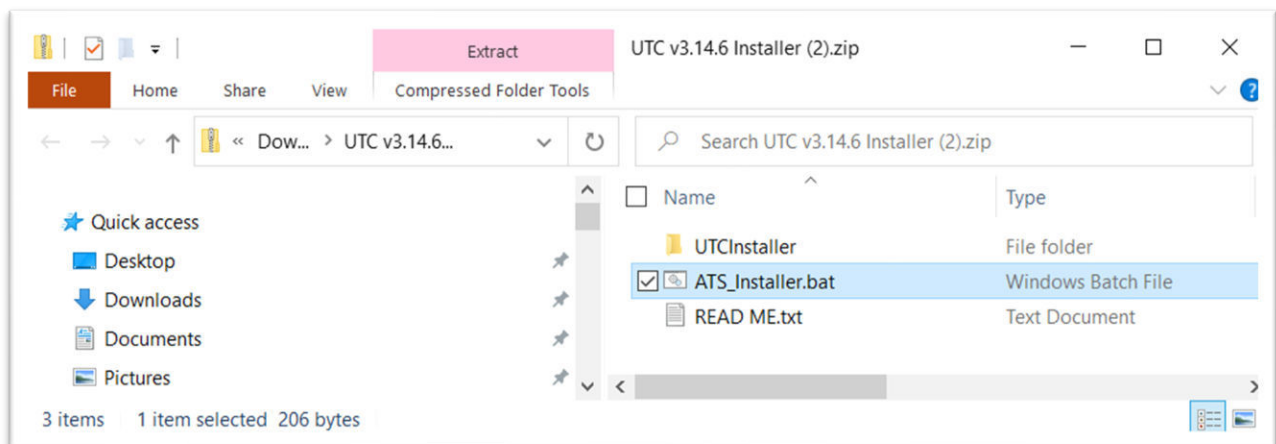
---

**TIP:** Save all original packaging, ATS Targets honors lifetime updates to all original software holders. Follow the screenshots on the next pages as you proceed through setup.

---

### 1. Install the software

- a. Double click on **ATS\_Installer.bat**, this will take you through the installation of the software and the drivers.



---

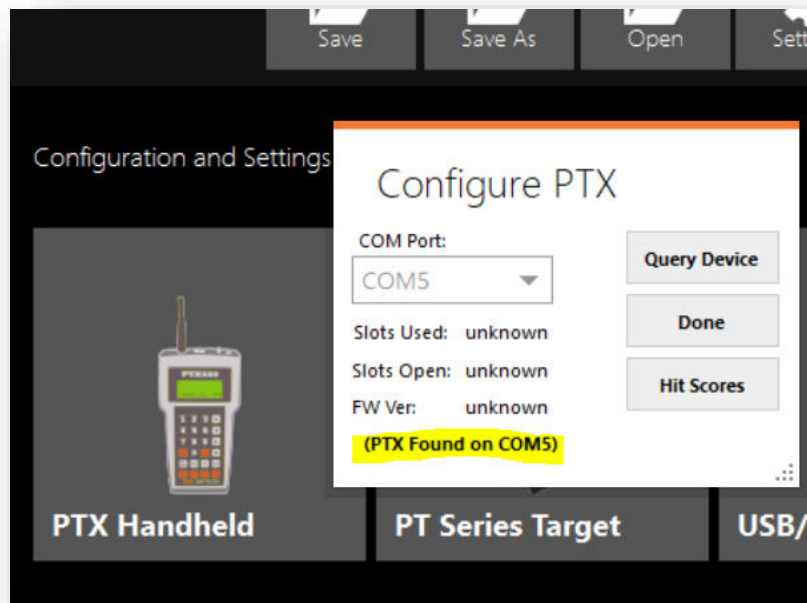
**TIP:** If this fails for any reason, both can be installed manually.

---

## 2. PTX Configuration

The PTX handheld controller must have its COM port set in the 'Configure PTX' dialog before programs can be sent/received to/from it.

- a. Close the UTC Software window
- b. Ensure the PTX is configured correctly for communication with the PC. See PTX manual for details. When properly connected, Windows should chime letting you know connection has been made. The screen on the PTX should read 'Serial Communication - Exit Cancels'
- c. Open UTC Software
- d. Select 'Settings' -> 'PTX Handheld'
- e. Wait up to 20 seconds as your computer searches for all devices. If found, the window will indicate 'PTX Found on COMXX'



---

**TIP:** If your PC cannot find the PTX port, you can click 'Query Device', or you can find it manually in the Device Manger of windows and manually select the proper Communication port from the 'COM Port' pull down menu.

---

- f. Click 'Done', your software is now configured for communication with your handheld PTX-XXX Controller.

### 3. USB Radio Configuration (If applicable, not required)

- g. Connect the USB radio to the PC and note the port number
- h. Go to "Configure->USB Radio"
- i. Select the COM port of the radio
- j. Click 'Read Current Channel' - the current channel will appear in a few seconds



### 4. PT-61 Radio Configuration (If applicable, not required)

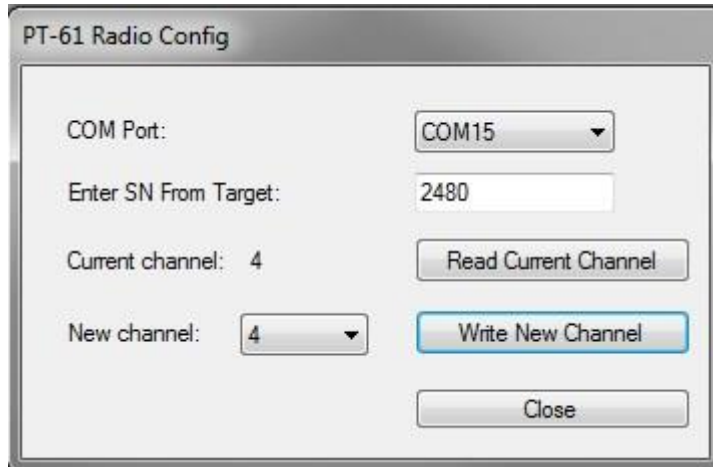
#### Reading the Radio Channel

- a. Connect the appropriate cable between the PC and the PT-61
- b. Go to "Configure->PT-61 Radio"
- c. Select the appropriate COM port
- d. Enter the serial number from the target label
- e. Click 'Read Current Channel' - the current channel will appear in a few seconds.



### Changing the Radio Channel

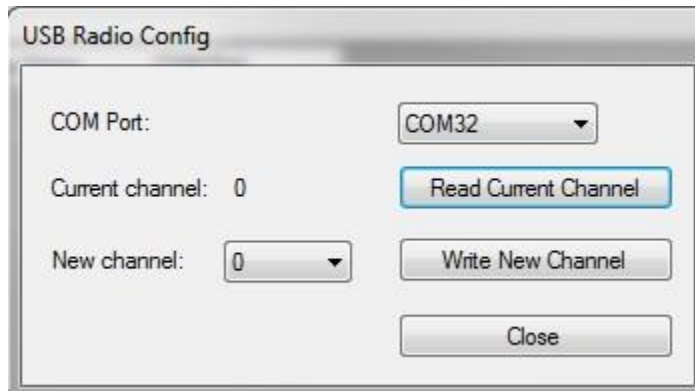
- a. Go through the above steps for "Reading radio channel", then select the desired new channel in the drop-down box and press 'Write New Channel' - the updated channel should appear after 'Current Channel'



## 5. USB Radio Configuration

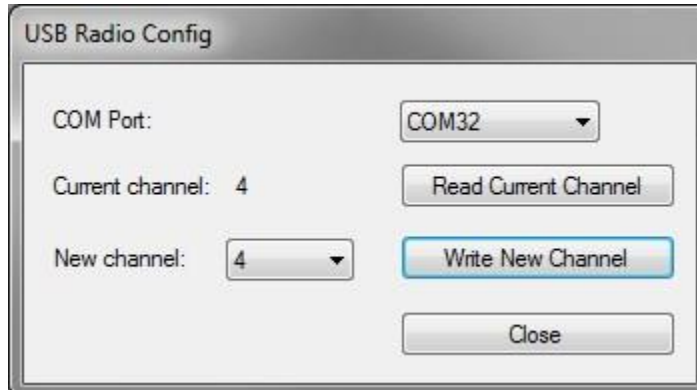
### Reading the Radio Channel

- a. Connect the USB radio to the PC and note the port number
- b. Go to "Configure->USB Radio"
- c. Select the COM port of the radio
- d. Click 'Read Current Channel' – the current channel will appear in a few seconds



## Changing the Radio Channel

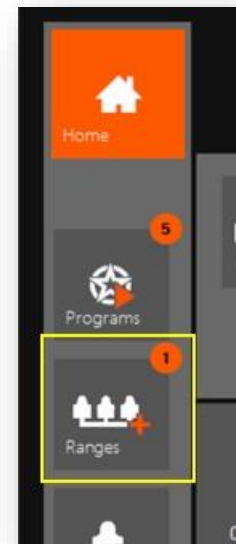
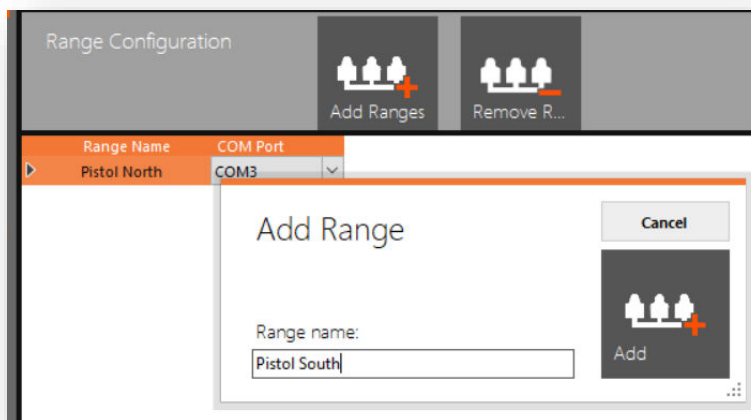
- e. Go through the above steps for “Reading radio channel”, then select the desired new channel in the drop-down box and press ‘Write New Channel’ – the updated channel should appear after ‘Current Channel’



## 6. Range Configuration

Logical ranges are configured in the ‘Range Configuration’ screen. Ranges are logical groups of targets meant to be controlled together. Different ranges can either share a COM port radio (in the case that they share a radio channel) or use multiple radios (in the case that the different ranges use different channels).

- a. In ‘Ranges’ – click on the “Add Range” button.



- b. Type in the desired range name.
- c. Click ‘Add Range’ – the range will be added to the list on the main window.
- d. Create as many ranges as desired – click ‘Close’ when finished.

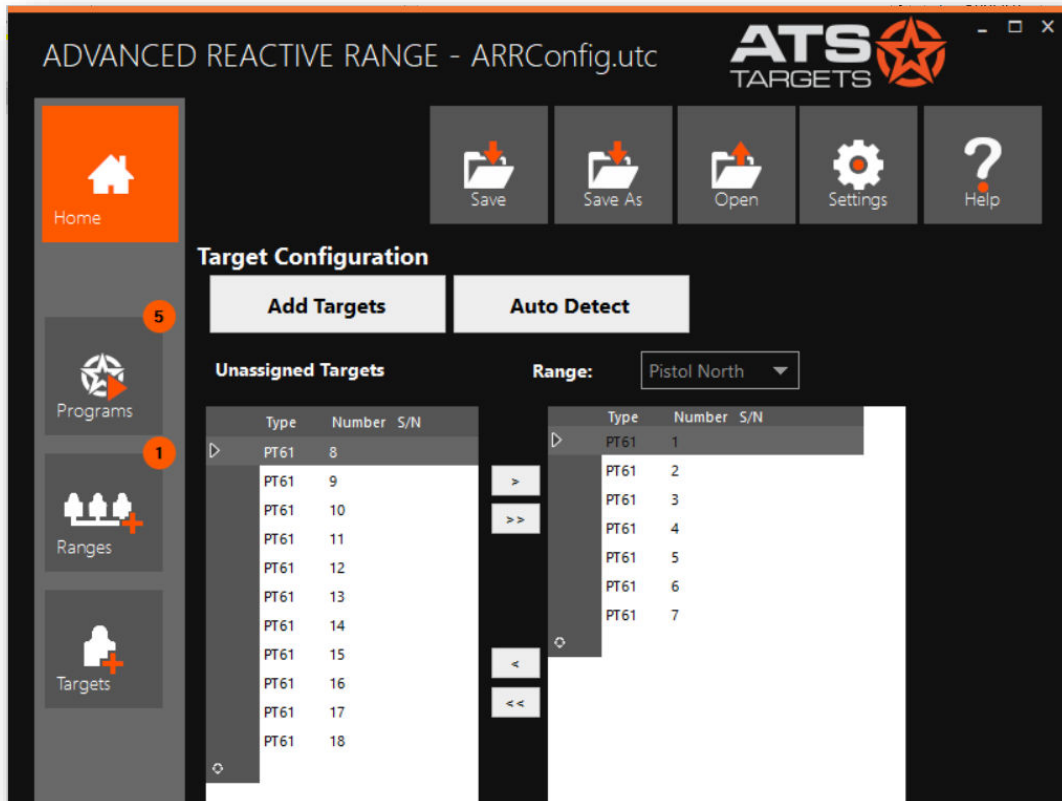
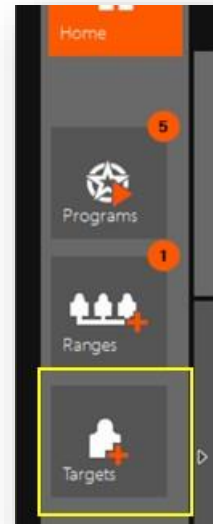
- e. Select the COM port of the USB or Bluetooth direct radio (if you have one) to use with each range using the drop-down box next to each range name.

## 7. Target Configuration

The 'Target Config' screen is used to add or detect targets, configure hit properties, and assign targets to the logical ranges configured in 'Range Configuration' above.

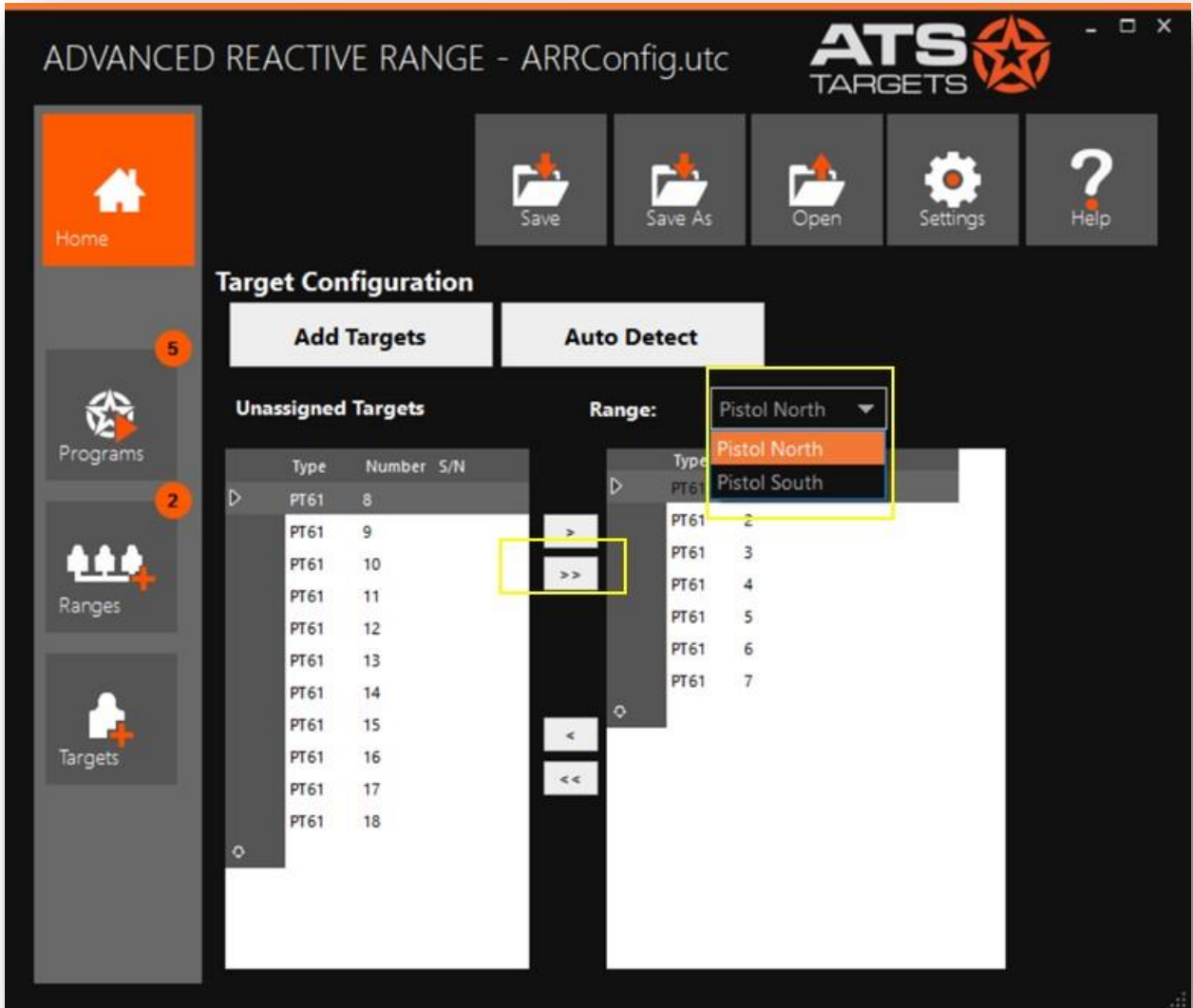
### Add Targets

- a. Use the add targets dialog to add targets by target number.
- b. Choose PT-61 or Mover under Target Type
- c. Enter first and last target numbers to be added.
- d. Click Add. The targets will be added to the left panel labeled "Unassigned Targets".



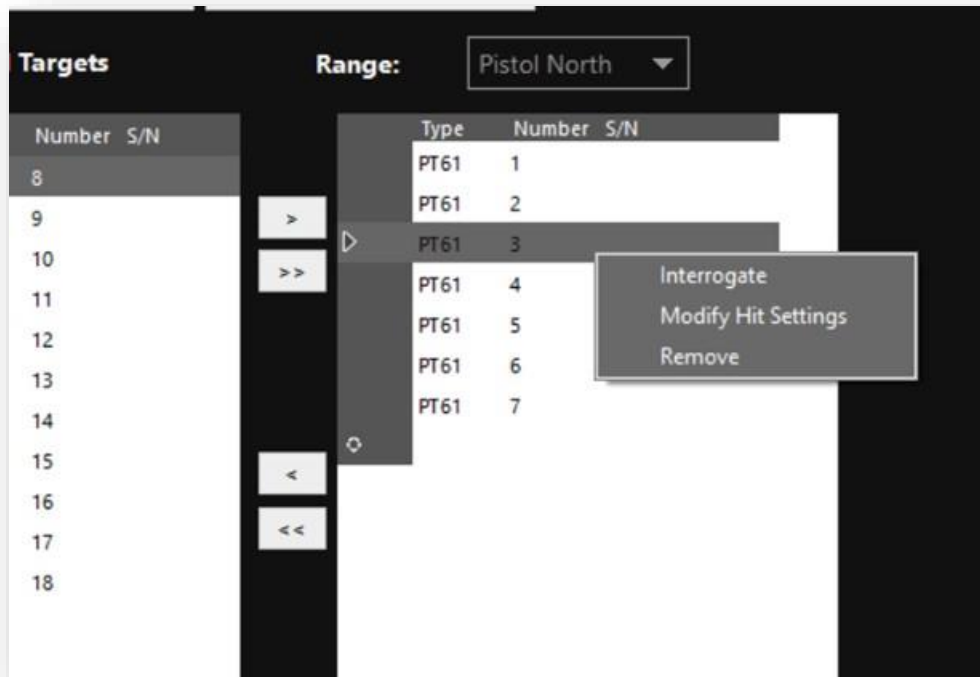
## Assigning Targets to Ranges

Use the left and right arrows to the right of the 'Unassigned Targets' grid to add or remove targets from each range. Different ranges can be selected by using the drop-down list labeled 'Range:'. Targets may only be assigned to one range at a time.



**TIP:** The order in which the targets are assigned to a range are the order in which they show up in the list, and the order in which they show up in the program and live screens.





### Interrogate

Interrogate is used to get the serial number of a target. Right-click on a target that has been assigned to a range and select 'Interrogate'. Multiple targets may be interrogated at once by holding the Ctrl or Shift keys while clicking with the mouse.

### Modify Hit Settings

Targets assigned to a range can have its hit settings modified by right-clicking on the target. Multiple targets may be modified at once by holding the Ctrl or Shift keys while clicking with the mouse.

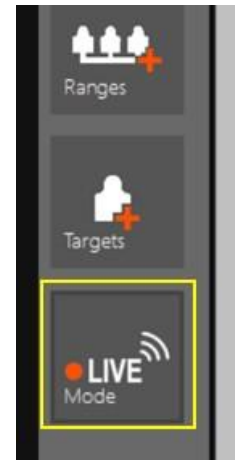
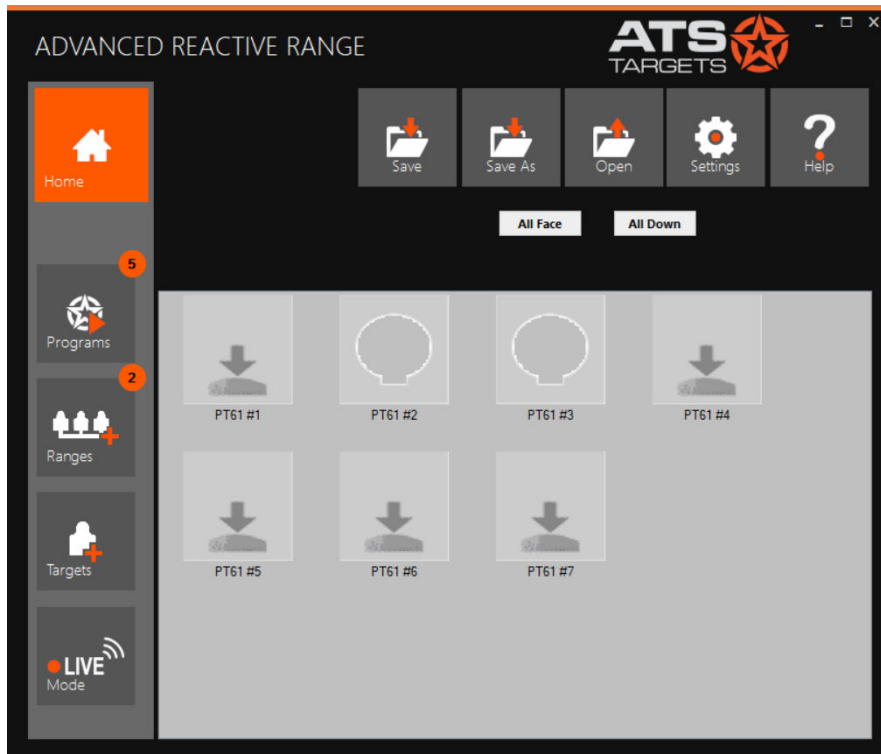
- a. Hit style – determines what the target does when it 'dies':
  - i) Off – target does not respond to hits and remains in position
  - ii) Bob – goes to the 'Down' position and comes back up.
  - iii) Die – target goes down and remains down
- b. Sensitivity – determines how sensitive the hit sensor is to gunfire. If hits are not being detected properly, this may need to be increased.
- c. Hits to die – the number of detected hits required for the target to 'die'.

### Removing Targets

Remove targets from the system by selecting them, right-clicking and choosing 'Remove'.

## 8. Range Live Mode

'Live View' is used when manual control of the targets is desired. All targets in the range can be controlled simultaneously by pressing the 'All Friend', 'All Edge', 'All Foe' or 'All Down' buttons at the top.



---

**TIP:** Targets can also be controlled by selecting one or more icons (using the Shift or Ctrl keys), then right-clicking on a target and selecting the desired action.

---