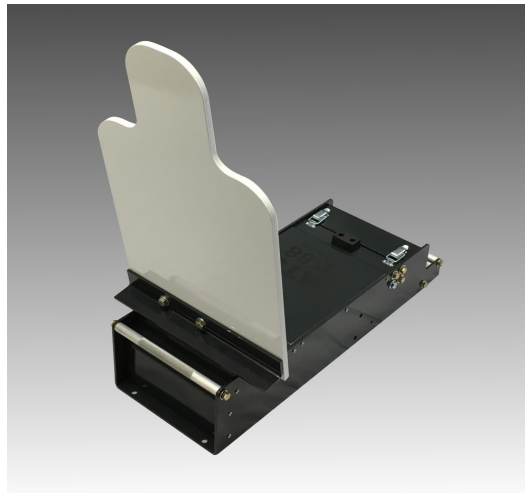


Product Overview

The Range Systems Pro-Sniper is a Pop-Up Reactive Sniper Target designed to simulate high-pressure, real-world scenarios. This system allows for the creation of new, dynamic, and challenging training cycles with just a few clicks, either through the wireless controller keypad or a handheld device.

Powered by a battery-operated electric system, the Pro-Sniper offers individual control for up to 200 targets, each equipped with its own wireless electronics. Since each target functions independently, the Range Master can program them to pop up at different times with varying delays, allowing precise control. Targets can be activated individually, in sequence, or simultaneously using Android, Windows, or handheld devices, all at the touch of a button.



Features and Benefits

- AR-500 Steel Target and protective plate
- All electric – rechargeable DC battery with standard or lithium options
- Pop-up/drop functionality
- For use as firearms qualification & tactical training aids
- Lightweight, portable, and flexible
- Fully programmable
- Auto Reset
- Hit reactive for dynamic training or scoring
- HD option available with larger lift capacity

Technical Specifications

Dimensions	
Base	24" L x 8 5/8" W x 5 3/4" H
Weight/ Capacity	
Base without target	47 lbs.
Lift Capacity (Standard)	70 lbs standard at 12"
Lift Capacity (HD)	200 lbs standard at 12"
Enviromental	
Temperature	32°F to 140°F (0°C TO 60°C)
Rain	Water resistant, do not submerge
Battery	
Type	Sealed lead acid or optional lithium ion
Capacity	12VDC / 7.5 AH minimum
Standby time	50 hours 100 hours with optional lithium ion
Run time	10 hours at 1 operation/min 20 hours at 1 operation/min with optional lithium ion
Connector (Charging/coms)	Mil-spec Amphenol PT series connector
Charger (Single)	
Type	IC
Input Voltage/Current	120VAC / 0.24 A 240VAC / 0.12 A
Input Voltage/Current	12VDC / 800 mA
Other	10 station charger available upon request
Transmitter (PTX Series Handheld)	
Battery type	2 9V alkaline (short & medium) 4 AA alkaline (long range)
Standby time	1 month
Run time	40 hours
Other	Lithium batteries available upon request Backlight standard for low light training – toggle switch

Radio	
Short-range	
Distance	600 m line of sight
Frequency Standard	900 MHz spread-spectrum FCCID MCQ-XB900HP
Frequency Option 1	2.4 GHz spread-spectrum FCCID MCQ-XBEE3
Frequency Option 2 (Japan)	2.4 GHz spread-spectrum Japan Approvals R210-119309
Transmit power	4 mW
Long Range	
Distance	2000 m line of sight
Frequency	900 MHz spread-spectrum
Transmit power	1 W
Recommend Target	
Cardboard	Single or Double wall water resistant cardboard such as MIL-V3c or Coroplast
Plastic Silhouettes 2D	ARMY-F Ribbed or Waffle ARMY-E Ribbed or Waffle
Plastic Silhouettes 3D	Short Ivan Full Ivan

WHAT'S IN THE BOX:

- Pro-Sniper Pop-up Target
- Battery
- Antenna
- Hit Sensor
- Target Holder
- Target (Silhouette standard, but other shapes upon request).

KEY ACCESSORIES TO CONSIDER:

- PTX-Series transmitter/controller
- UTC Windows or Android Software
- Battery Charger
- Ballistic Protective Barrier
- Target Backers

INPUTS/OUTPUTS

