

Product Overview

Range Systems Sim-Tact™ Simulation Shoot Houses can be built to your unique specifications. Any floor layout size or configuration can be accommodated, from small single rooms to large multi-room complexes. The floor layouts can then be quickly and easily reconfigured, challenging users in a manner that accurately represents what could be experienced operationally.

Each system can be easily set-up and taken-down with minimal effort (no tools/no ladders) using a patent pending bracket system and built-in user-friendly handling-grips to move the panels. The entire system can be compactly stored, moved to other locations, reconfigured or extended as needed.

Training environments can be quickly and cost-effectively built, new layouts deployed to fully challenge learners, all while providing excellent educator observation capabilities. Sim-Tact™ Shoot Houses are designed to be safely used with Simunition® or marking rounds and can be fitted with breachable windows and doors, providing a wide variety of service training scenarios.

Available in 3 standard packages,
each with endless layout options

Key Features and Benefits

- Easy, fast to set up
- Reconfigurable
- Designed and certified to be safely used with Simunition® training rounds



Technical Specifications

Standard (Solid)

- Dimensions are 7' High X 4' Wide X 4" in Thickness
- Approximately 90 lbs.
- Exterior is Medium Density Sign Board resistant to "Marking Cartridges".
- Easily cleaned
- Paintable
- Precision cut handles on exterior with baffles to prevent pass through of "Marking Cartridges"
- Precision cut top and bottom plates containing handles, holes for brackets and 4 holes to position camera and accessory brackets

Door Panel

- Dimensions are 7' High X 4' Wide X 4" in Thickness.
- Approximately 115 lbs.
- Same construction as Standard Panel.
- Solid core commercial door.
- Industrial handset
- Beveled bottom door plate for reinforcement.

Window Panel

- Dimensions are 7' High X 4' Wide X 4" in Thickness.
- Approximately 90 lbs.
- Same construction as Standard Panel with window opening.
- "Lexan" window and integrated frame to disperse energy.
- Friction fit into opening on 4 rubber corners.

Brackets

- Variety of Bracket types to ensure the capability of maximum flexibility in set-up.
- NO Tools or ladder required for set-up
- Brackets are Laser Cut Steel
- Powder Coated paint treatment
- Accessory Brackets for mounting Audio Visual equipment throughout the structure.
- Spanner brackets to create a 4' opening
- Support brackets to fortify "unattached wall"

Reconfigurable to Meet Your Training Requirements



Unlimited Floor Plans

- ▶ Homes
- ▶ Apartments
- ▶ Garages
- ▶ Stores
- ▶ Shopping Malls
- ▶ Industrial Buildings



Convenience Store



Bedroom with Closet

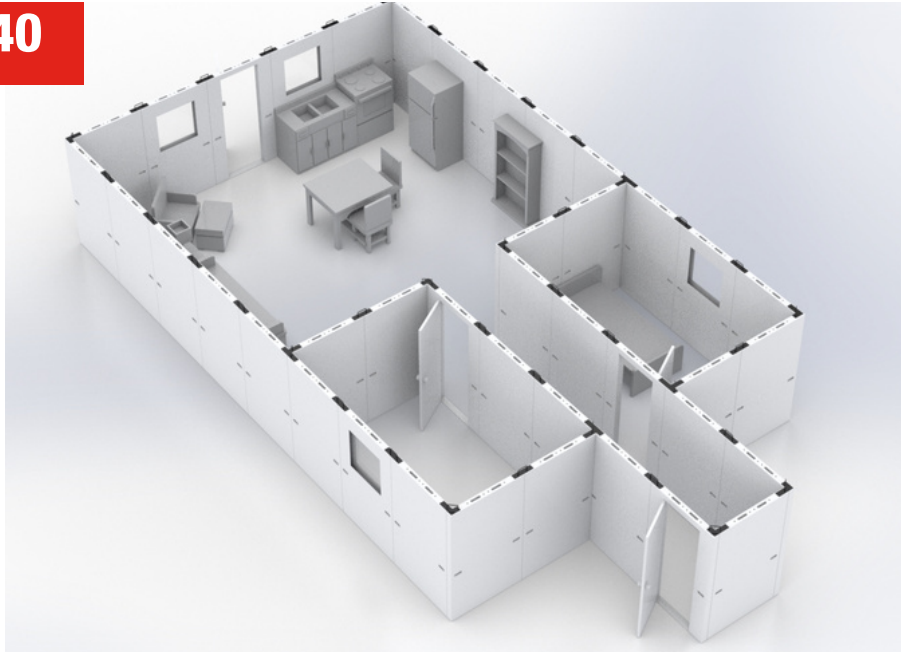


Post Office



Industrial Building

Sim-Tact™ 40



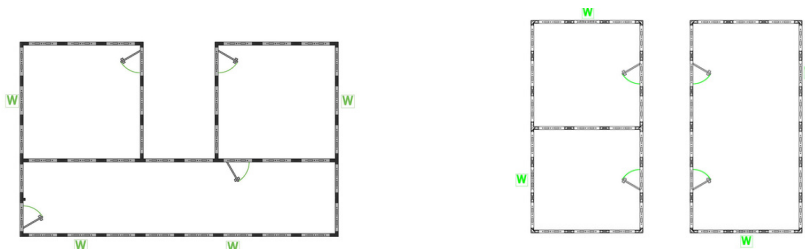
PACKAGE INCLUDES

Quantity	Simunition Shoot House Component
32	Simulator Structure STANDARD Panel
4	Simulator Structure DOOR Panel
4	Simulator Structure WINDOW Panel
4	Connecting Bracket Package (one required for every 10 panels)
4	Corner Post
1	Support Arm Sets
1	Spanner Sets
1	Freight and Handling
1	Set-Up Tech Support and Training

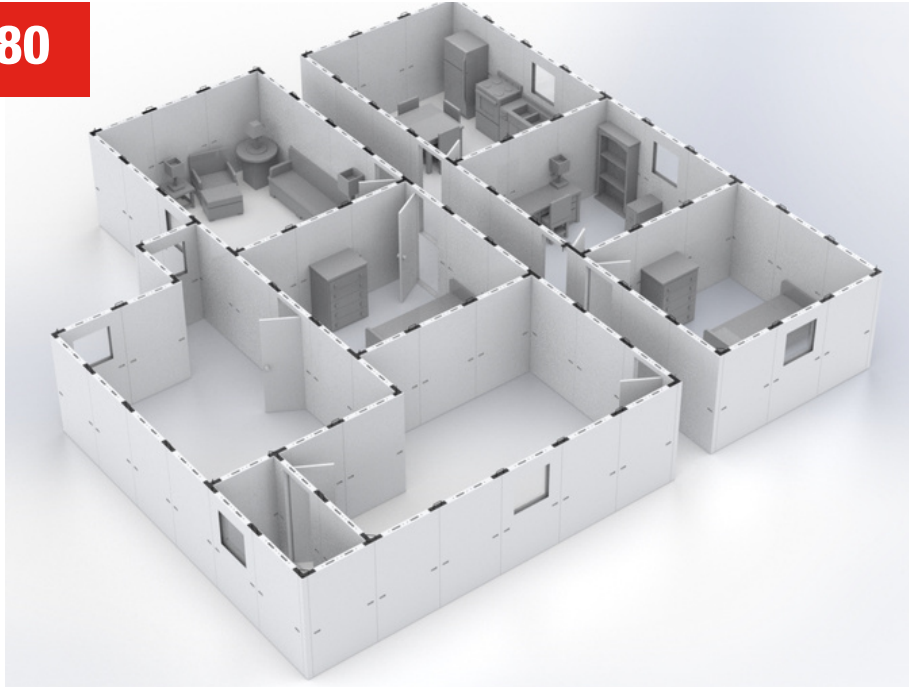
*Sales tax will be applied unless an exemption certificate is provided.

Reconfigure each package for an endless amount of possibilities to suit your training needs

ALTERNATIVE LAYOUTS



Sim-Tact™ 80



PACKAGE INCLUDES

Quantity	Simunition Shoot House Component
64	Simulator Structure STANDARD Panel
8	Simulator Structure DOOR Panel
8	Simulator Structure WINDOW Panel
8	Connecting Bracket Package (one required for every 10 panels)
4	Corner Post
2	Support Arm Sets
2	Spanner Sets
1	Freight & Handling
1	Set-Up Tech Support and Training

*Sales tax will be applied unless an exemption certificate is provided.

Reconfigure each package for an endless amount of possibilities to suit your training needs

ALTERNATIVE LAYOUTS

